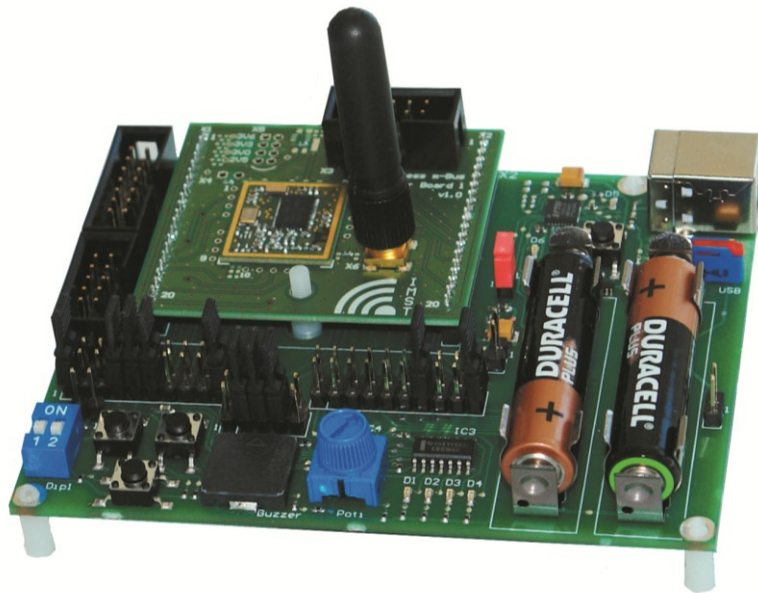


Wireless M-Bus Starter-Kit

Quick Start Guide



IMST GmbH

Carl-Friedrich-Gauss-Str. 2-4

D-47475 KAMP-LINTFORT



1 Introduction

The Wireless M-Bus Starter Kit is a plug & play solution to explore features and capabilities of the iM871A Wireless M-Bus radio module. This document describes how to get the Starter-Kit SK-iM871A running.

1.1 Content of this Kit

Hardware:

- 2x WiMOD Demo Boards
- 2x module specific adapter boards with soldered radio modules
- 2x external antennas
- 2x male A/B USB cables
- 4x AAA type batteries
- Installation CD containing software and documentation

Software and Documentation:

To run the Starter Kit, a PC with Windows XP (or newer) and at least one USB port are necessary.

Nr	File	Comment
1	\tools\setup.exe	Installation file for the Wireless M-Bus Studio PC software
2	\drivers\CDM20814_Setup.exe	USB PC driver
3	iM871A_StarterKit_QuickStartGuide.pdf	This document
4	\documentation\iM871A_Datasheet.pdf	iM871A Datasheet
5	\documentation\iM871A_WMBus_UserManual.pdf	Wireless M-Bus User Manual for iM871A
6	\documentation\WMBus_StudioManual.pdf	Wireless M-Bus Studio Documentation
7	\documentation\DemoBoard_UserGuide.pdf	User guide for the WiMOD Demo Board
8	\documentation\WMBus_HCI_Spec.pdf	Host Controller Interface Specification
9	\documentation\WMBus_HCIDLL_Spec.pdf	Host Controller Interface Library Specification
10	\documentation\SK-iM871A_Tutorial.ppsx	Starter Kit Tutorial
11	\documentation\iM871A_AN007_Sensitivity_Measurements.pdf	Application Note Sensitivity Measurements
12	\documentation\iM871A_AN008_SK_Current_Measurements.pdf	Application Note Current Measurements
13	\firmware\iM871A_WMBus_FW.hex	Binary firmware file

Visit www.wireless-solutions.de to get the latest information about our products, software and documentation.

2 Getting Started

2.1 Software Setup

The Wireless M-Bus Studio can be used for configuration of the preprogrammed radio modules and allows a simple radio link evaluation as well as Wireless M-Bus packet sniffing.

Setup of the PC

First copy the complete content of the enclosed installation CD to a local folder on your PC. Then install the hardware driver for the USB chip on your PC. Either take it from the local folder (<local folder>\drivers\CDM20814_Setup.exe) or get it from the USB chip manufacturer's web site.¹

Wireless M-Bus Studio

Start installing the Wireless M-Bus Studio by double clicking the executable "setup.exe". The Installation Wizard is started and the Wireless M-Bus Studio tool will be installed on the PC.



Figure 1: Wireless M-Bus Studio Installation Wizard

Now the required software is ready to be used. For a detailed description of the included applications and its features please refer to the Wireless M-Bus Studio Documentation.

¹ <http://www.ftdichip.com/Drivers/VCP.htm>.

² If the WiMOD Studio does not start it might be possible that the Windows OS on the host PC needs the [Microsoft Visual C++ 2008 Redistributable Package \(x86\)](#). Download this package from the Microsoft link above.

2.2 Hardware Setup

Setup of the Demo Boards

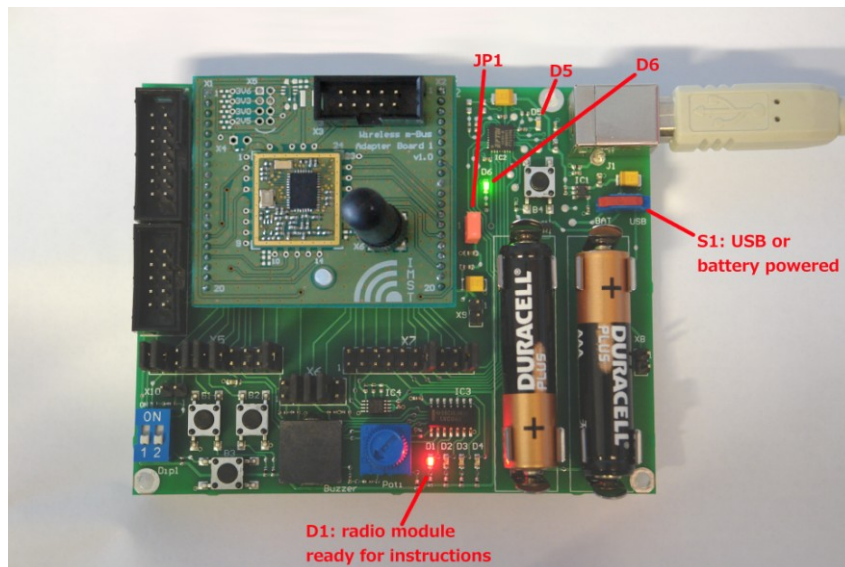


Figure 2: Wireless M-Bus module iM871A and Demo Board

- Plug the adapter boards with the soldered radio module on the Demo Boards.
- Mount the antennas on the boards.
- Make sure that the supply voltage jumpers JP1 are set on both boards
- Verify that the jumper configuration is equal to the default jumper setup:

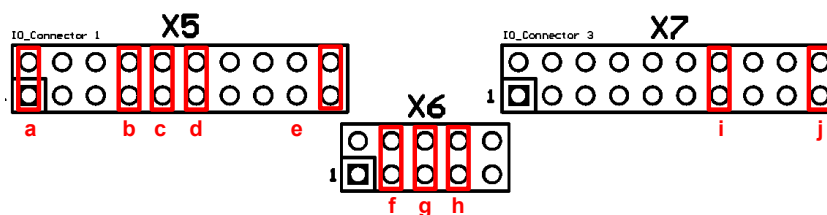


Figure 2-3: Default jumper set-up

Connect the Demo Board with an USB cable to your PC and switch S1 into position “USB”. If successful, the power LED (D6) and the USB LED (D5) are turned on. After the Demo Board is detected by your PC as a new hardware please follow the given instructions to install the new virtual COM port.

The red LED (D1) indicates that the radio module is awake and ready to receive instructions from the Wireless M-Bus Studio.

3 Wireless M-Bus Studio

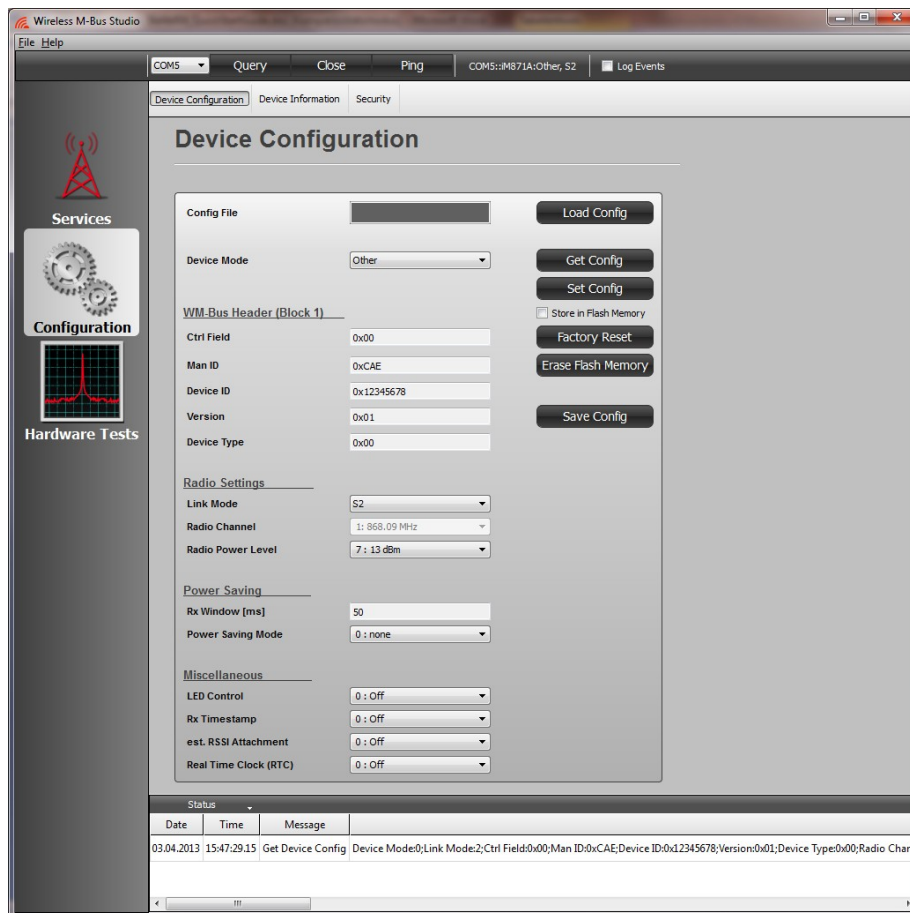


Figure 3-1: Wireless M-Bus Studio

1. Open the Wireless M-Bus Studio tool to configure the radio module
2. Press *Query* button to get an updated list of COM ports
3. Select the used COM port from the COM port list
4. Press *Open* to connect to the Demo Board
5. Repeat step 1-4 for the second board (a new instance of the Wireless M-Bus Studio is needed)
6. Be sure to choose a reasonable parameter combination to establish a Wireless M-Bus communication: Device Mode, Link Mode, Channel, if applicable (=> Get Config)
7. For a visual feedback the LED control can be enabled at both devices
8. Open the *Message Generator* (*Services* => *Message Generator*) at the local device to initiate sending example packets to the peer device

4 Important Notice

4.1 Disclaimer, limited liability and usage restriction

IMST GmbH points out that all information in this document is given on an “as is” basis. No guarantee, neither explicit nor implicit is given for the correctness at the time of publication. IMST GmbH reserves all rights to make corrections, modifications, enhancements, and other changes to its products and services at any time and to discontinue any product or service without prior notice. It is recommended for customers to refer to the latest relevant information before placing orders and to verify that such information is current and complete. All products are sold and delivered subject to “General Terms and Conditions” of IMST GmbH, supplied at the time of order acknowledgment.

IMST GmbH assumes no liability for the use of its products and does not grant any licenses for its patent rights or for any other of its intellectual property rights or third-party rights. It is the customer’s duty to bear responsibility for compliance of systems or units in which products from IMST GmbH are integrated with applicable legal regulations. Customers should provide adequate design and operating safeguards to minimize the risks associated with customer products and applications. The products are not approved for use in life supporting systems or other systems whose malfunction could result in personal injury to the user. Customers using the products within such applications do so at their own risk.

Any reproduction of information in datasheets of IMST GmbH is permissible only if reproduction is without alteration and is accompanied by all given associated warranties, conditions, limitations, and notices. Any resale of IMST GmbH products or services with statements different from or beyond the parameters stated by IMST GmbH for that product/solution or service is not allowed and voids all express and any implied warranties. The limitations on liability in favor of IMST GmbH shall also affect its employees, executive personnel and bodies in the same way. IMST GmbH is not responsible or liable for any such wrong statements.

Copyright © 2011, IMST GmbH

4.2 Contact Information

IMST GmbH

Carl-Friedrich-Gauss-Str. 2-4
47475 Kamp-Lintfort
Germany

T +49 2842 981 0

F +49 2842 981 299

E wimod@imst.de

I www.wireless-solutions.de